



Education Foundation
Clarksville-Montgomery County

2015-2016 IMPACT REPORT



Education Foundation
Clarksville–Montgomery County



Education Foundation
Clarksville–Montgomery County

Our Mission:

The Clarksville-Montgomery County Education Foundation exists to support the improvement of public education by providing the Clarksville-Montgomery County School System additional funding for the support of programs and initiatives that contribute to student achievement.

We begin where tax dollars end.



“The CMCSS Education Foundation is a cornerstone for the school district and has been for 28 years. Since its inception, it has been instrumental in assisting our schools and staff members by helping them monetarily through grants, the teacher warehouse, supplying equipment needs, or helping match them with community resources. The volunteers who comprise the board firmly and enthusiastically support the school district and I am grateful for their passion and commitment to our students and their success. They are truly making a difference in our schools.”

B. J. Worthington
Dr. B. J. Worthington, CMCSS
Director of Schools

CMCSS Snapshot

CMCSS Strategic Work

- Improve Student Achievement
- Improve Efficiency and Effectiveness
- Maximize Employee Capacity
- Engage the Public in Support of Student Achievement



Graduation Rate:

CMCSS (2015): 96.5%
Tennessee: 87.8%

ACT Scores:

CMCSS: 19.4 composite average
Tennessee: 19.4 composite average
All Tennessee students are required to take the ACT in 11th grade.

Our Schools

CMCSS is the seventh largest school district in Tennessee:

Total number of schools (2015-2016): 39

Elementary schools: 24

Middle schools: 7

High schools: 7 and 1 Middle College High School at Austin Peay State University

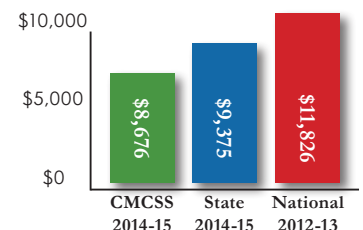
Per Pupil Expenditure

2015–16

CMCSS: \$8,676*

State: \$9,375

National: \$11,826 (2012-13 data)



* This total includes \$14 million in competitive grants at local level from state and federal grants.

2015 Achievement (3 year)

MATH	READ	SS	SCI
A	B	N/A	A

A = Exemplary
B = Above Average
C = Average
D = Below
F = Deficient



Education Foundation Highlights

1,037

Academic Awards
Recipients Honored

1,467

Volunteer Hours
Served

\$59,240

Savings to Teachers
for Supplies

\$20,000

for
NWHS Academy

53

Teacher of the Year
Recipients

\$25,900

Grants/Scholarships
Awarded

Overall \$404,085 was received from the community through the Foundation to support Clarksville-Montgomery County Teachers and Students

- 1,467 hours were served supporting Foundation programs by approximately 230 volunteers creating a human capital savings to Foundation operating costs of \$33,832.16!
 - Education Foundation Scholarships were awarded to eight deserving CMCSS senior students completing Career Technical coursework and maintaining a 3.0 GPA in their programs of study.
 - Great Idea Teacher Grants were awarded to 22 CMCSS educators to implement innovative ideas in their classrooms and for school-wide initiatives.
 - 53 Outstanding teachers were recognized during a CMCSS Teacher of the Year reception and awarded \$5,900 in incentives for their excellence in the profession.
 - Nearly 400 CMCSS Career Academy students at the Northwest High School Health Science Academy received 1:1 laptops and scrubs through a partnership with Premier Medical Group.
 - 1,037 CMCSS High School students maintaining high Academic standards were rewarded at the 27th Annual Education Foundation Academic Awards Recognition Banquet and in-school ceremonies.
 - 1,481 CMCSS Teacher Warehouse appointments were fulfilled this school year, saving teachers nearly \$59,240.
- Please continue reading the entire 2015-2016 Impact Report or visit: www.cmceducationfoundation.com, to learn more about the great work the Foundation is doing to support CMCSS and how you or your company can be a part of our work!

Board of Directors



Brian Taylor-Foundation President
Clarksville Dept. of Electricity, CEO

Bill Powers -Foundation Vice President
Wyatt Johnson Automotive Group,
General Manager

Tommy Bates -Foundation Treasurer
Legends Bank, President

Antonio Murgas -Foundation Secretary
Domino's Pizza, Owner

Jeff Burkhart
WBW/Clarksville City Councilman

Kay Martin (Emeritus)
Community Leader, Retired

Cassandra Osborne
CEMC, Retired

Lori Smith
Clarksville Fencing, Owner

Margo Purvis
Queen City Disposal

Dr. Mike Carrigan
Premier Medical Group

Maria Jimenez
Jimenez Consulting & Tax Services,
Owner

Marla Rye
Workforce Essentials, Inc., CEO

Charles Keene
County Commissioner

Richard Stevens
The Leaf-Chronicle, Retired

Mark Kelly
Valerie Hunter-Kelly & the Air Assault
Team, Owner

Joel Wallace
Cunningham, Mitchell & Rocconi,
Partner

Stephanie Lobdell
Cumberland Electric Membership
Corporation, Public Relations Coordina-
tor

Rudy Johnson (Emeritus)
Rufus Johnson & Associates, Owner

Abby Binkley
CMCSS Administrative Offices,
Foundation Executive Director

Dr. B. J. Worthington (Ex-Officio)
CMCSS Administrative Offices,
CMCSS Director of Schools

Elise Shelton (Ex-Officio)
CMCSS Administrative Offices,
CMCSS Chief Communications Officer

Katie Williams
CMCSS Administrative Offices,
Foundation Coordinator

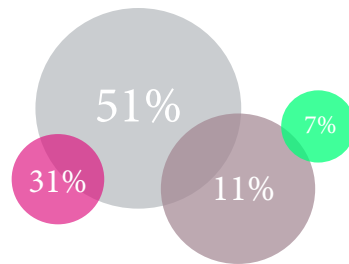
"I am proud to help lead the Foundation as we work towards funding several programs which enrich the lives of students and teachers in Clarksville Montgomery County. Our investors help us to provide additional tools for teachers and incentives and new opportunities for students. We help to extend our local education dollars by involving the greater community."

Brian Taylor
Foundation President



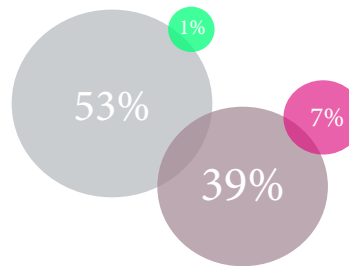
CMC Education Foundation Statement of Financial Position

ASSETS	June 30, 2016
CURRENT ASSETS	
Cash in bank-First Advantage Bank	\$ 98,644.26
TOTAL CURRENT ASSETS	\$ 98,644.26
NONCURRENT ASSETS	
Investments CMC Education Foundation	\$166,582.84
Investments-Burt High School Reunion	\$122,751.84
Community Foundation CMI Endowment	\$ 45,097.25
Furniture, fixture & equipment	\$ 1,580.99
Less: Accumulated depreciation	\$ -1,373.75
TOTAL NONCURRENT ASSETS	\$334,639.17
TOTAL ASSETS	\$433,283.43
LIABILITIES AND NET ASSETS	
CURRENT LIABILITIES	
Funds held for others	\$ 96,836.02
TOTAL CURRENT LIABILITIES	\$ 96,836.02
NET ASSETS	
Unrestricted net assets	\$151,430.35
Temporarily restricted net assets	\$185,017.06
TOTAL NET ASSETS	\$336,447.41
TOTAL LIABILITIES AND NET ASSETS	\$433,283.43



Revenues \$379,048.24

- General Fund (Vision to Reality, Annual Campaign, Interest, Other)
- City Saver District Wide Fundraiser
- Restricted Program Sponsorships for CMCSS Teachers & Students
- Count Me In Endowment Funds- Pledges Paid



Expenses \$310,126.28

- Operational Expenses (Legal, Accounting & Marketing)
- City Saver District Wide Fundraiser
- Programs Supporting CMCSS Teachers & Students
- Count Me In Endowment

*The above graphs reflect end of year financial report revenues raised of **\$379,048.24**. Please see Foundation website for complete breakdown of program expenses or visit www.guidestar.org.

“When the community and local school system come together everyone wins. We are intentional in the planning and implementation of programs that meet the ever changing needs of public schools. I am honored to serve CMCSS students, teachers, and stakeholders through my role as Foundation Director.”

Abby J. Binkley

Abby Binkley
Executive Director





CMC Teacher Warehouse

The CMC Teacher Warehouse opened its doors in July of 2010 in a small break room at the CMCSS operations complex. Now, in its sixth year, the Teacher Warehouse is located at the CMCSS Central Services South building on 1312 Hwy 48/13.

The Teacher Warehouse allows CMCSS teachers the opportunity to have access to new and gently used donated supplies for the benefit of student achievement. In the past six years, the store has saved local teachers nearly **\$281,240** in out-of-pocket expenses. The store is fully staffed by volunteers who have dedicated more than 1,400 hours to ensure its continued success.

To inquire about volunteering, donating or hosting supply drives in support of the mission please contact the Foundation office at 931-920-7928.

"I cannot begin to thank you enough for everything that you have donated towards the Teacher Warehouse. Every little bit counts and this was a huge help, especially as a first year teacher! I was so excited to have this opportunity to shop for school supplies at the Warehouse and can't wait to begin the school year!" - Larsyn Stacey, CMCSS Teacher



Most Used Items :

- Pencils
- Dry Erase Markers
- Copy Paper
- Post-It Notes
- Wide Ruled Paper
- Highlighters
- Card Stock
- White Out
- Clorox Wipes
- Pencil Erasers
- Glue Sticks
- Markers
- Tape
- Index Cards



1,481 CMCSS Teacher Warehouse appointments were fulfilled this school year!

Teacher Warehouse Satisfaction Survey Results reflected below indicate that CMCSS teachers utilizing the Teacher Warehouse spend less on supplies compared to the the national average of \$500-\$1,000 spent by teachers annually.

Personal Savings of Teacher Warehouse Users:

- 26.8% saved up to \$40
- 43.9% saved between \$40 and \$120
- 29.3% saved between \$120 and \$200

Personal Shopping Experience of Teacher Warehouse Users:

- 60.87% Excellent
- 27.17% Good
- 8.70% Average
- 1.09% Fair
- 2.17% Poor

Teacher Warehouse Usage by CMCSS Grade Levels:

- Elementary 43.1% of users (24 elementary schools)
- Middle 27.4% of users (7 middle schools)
- High 29.5% of users (8 high schools)

CMC Teacher Warehouse

- In celebration of their recent name change, Fortera Credit Union, formerly known as Fort Campbell Credit Union, donated \$2,000 to the CMC Teacher Warehouse at their Chamber Ribbon Cutting Ceremony on the morning of April 12. CMC Education Foundation Vice President Bill Powers was present to accept the check from Fortera President and CEO Tom Kane. The donation will be used to purchase supplies to restock the Teacher Warehouse for the upcoming school year.





CMC Education Foundation Academic Awards

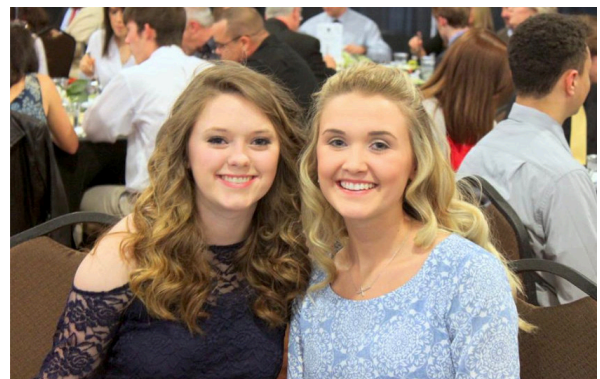
For the 27th year the Clarksville-Montgomery County School System and Education Foundation continued its tradition of recognizing academic excellence of CMCSS high school students.

To receive the academic achievement award, a student must maintain a 93 grade average with no grade lower than 85 in any one subject. This academic criteria has remained the same since the inception of the program. Students who are first or second-year recipients are honored at school assemblies in the spring and third-year recipients are invited to be recognized at a Foundation and community-sponsored banquet with their parents.

To date, more than 13,381 CMCSS student awards have been given with approximately 1,243 students receiving this honor for three consecutive years. The speaker for the this year's banquet was Danielle Mezera, Ph.D. Assistant Commissioner, Tennessee Department of Education, Division of College, Career and Technical Education.



CMC Education Foundation
ACADEMIC AWARDS

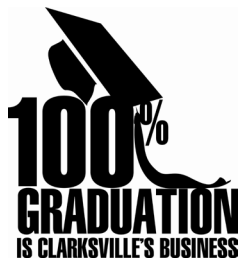


100% Graduation

The Clarksville-Montgomery County School System currently boasts of a 96.5% graduation rate. CMCSS continues to strive towards 100% of students graduating college and career ready as a part of its community based initiative started in 2008. The Education Foundation has implemented many motivational opportunities for students such as: Get Motivated Assemblies and a student Leadership Conference to support graduation efforts. This year, the Foundation continued its Get Motivated 2019 celebration bringing in nearly 2,500 freshmen from all

seven CMCSS high schools to hear from popular youth speaker, David Edward Garcia on “Being the Defining Difference” as high school students. His motivational and humorous speech provided many takeaways for students!

“High school graduates in Clarksville-Montgomery County will enhance the economic future of our community by \$128,500 for each of the 1,997 high school diplomas earned this year.” - Dr. Kimmie Sucharski, CMCSS District Accountability and Data Analyst



8th Grade Career Exploration Day

The Education Foundation believes that early career exposure and planning is a great way to help CMCSS meet its goal for students to graduate college and career ready. The Foundation partnered with the Career Technical Education Office of CMCSS to co-sponsor the district-wide Career Exploration Fair.

This event was designed to help students make a connection between the courses they take with the real world, for a smooth transition into high school. Eighth grade students take the Navigator Interest Inventory and used those results to begin career exploration before attending the event.

Nearly 50 local and regional businesses and five post-secondary institutions showcased career opportunities for the 2,300 CMCSS students in attendance.

Each of the seven high school career academies had student representatives on site to expose students to their programs. This year’s fair was a great success!





Foundation Scholarships

One focus of the Education Foundation is to provide competitive postsecondary scholarships to students enrolled in the Academies of CMCSS and Career Technical Education program courses. The one-year scholarship is designed to celebrate their hard-work and assist with their transition to college.

Eight deserving CMCSS high schools seniors received \$5,900 collectively based on their academic and leadership achievements.

To learn more about establishing a specific scholarship fund through the Foundation, please contact us at 931-920-7955.

This year's \$1,000 recipients, RaeAnne Black (MCHS), Jenine Lowe (MCHS), are pictured above. Other recipients include: Danayla Odom-West (NEHS), Ushma Patel (NEHS), Matthew Trotter (MCHS), Raquel Powell (RHS), Shelby Thornton (MCHS), Lindsey Davis (MCHS).

"According to the Association for Career and Technical Education, Career and Technical Education (CTE) in Tennessee returns \$2 for every \$1 invested. At the secondary level, CTE program completers account for more than \$13 million in annual tax revenues. Investing funds to support scholarships for students who are pursuing CTE pathways is investing in the prosperity of our state."

-Karen Pitts, Career Tech Education Coordinator

Burt High Reunion Association Scholarship Endowment



Shayla Gholston

The Burt Scholarship Endowment Fund was established in 2010, by the Burt High School Alumni Association to promote attainment of higher education for descendants of Burt. The scholarship is administered by the Education Foundation through a separate endowment with funds raised at the annual Burt Alumni Reunion event.

This year's recipient of a four-year renewable \$1,000 scholarship is Shayla Gholston.

Teacher of the Year Recognition Program

The Education Foundation, in partnership with the Director of Schools, honors teachers selected by their schools to represent CMCSS as the building level Teacher of the Year, for their hard work and dedication. In its third year, the Foundation hosted a reception for the teachers and their families and awarded \$100 stipends to 53 teachers. Additionally, \$300 was given to the top three teachers selected to represent the district at the regional level.

This program is one way the Foundation can say thank you to teachers and encourage them to keep doing great things for our students.





Great Idea Grants

Great Idea Grants are awarded to CMCSS teachers and school administrators for innovative classroom or school-wide projects. Awards are given for up to \$1,000 per selected applicant for the benefit of increasing student achievement.

Twenty-two CMCSS educators received approximately \$20,000 in grants. Funded projects had a direct impact on 8,548 CMCSS students. The projects included: fitness labs and exercise equipment, middle school robotics programs, special education enrichment and intervention, literacy initiatives, iPads, professional development, high school academy initiatives, Chrome books, art projects, library improvements, behavioral incentives, school store implementation and much more!





10,726 CMCSS Students Impacted by Teacher Grants

Casey Boehm
Shelia Krantz
Allison Stanley
Sango Elementary

Cary Wright
Pisgah & Oakland Elementary

Ben Griffy
Kaye Grant
Pisgah Elementary

Carrie Allison
Kelly Gaskins
Cumberland Heights Elementary

Jennifer Menees
Angel Furcolowe
Rossvie Elementary

Kristin Hedges
Glenellen Elementary

Amanda Tarver
Barbara Kane
Norman Smith Elementary

Rebecca Zuercher
Ringgold Elementary

Belinda Cornell
Burt Elementary

Timothy Mitchell
Liberty Elementary

Melissa Vallejos
Clara Patterson
Jennifer Curry
Kelsea Cox
Nikki Lavigne
Barkers Mill Elementary

Rebecca Jackman
New Providence Middle

Todd Taylor
Northeast Middle

Whitney Joyner
Northeast Middle &
Northeast High

Ashley McDonald
Northwest High

Shari Tharpe
Clarksville High

Congratulations to all educators who received Great Idea Grants this year.



The Academies at CMCSS

The Clarksville-Montgomery County School System offers seven high school career focused Academies to incoming freshmen seeking to study in a small learning community, based on career interest. To date, there are nearly 1,200 CMCSS high school students who attend one of the seven Academies. Students enrolled will graduate with practical skills, internship experiences and some certifications for the opportunity to gain an entry-level position in their field of study. To learn more about enrollment in one of the Academies at CMCSS please contact the high school guidance counselor.

Through the Partners in Education program, businesses and organizations may become a Career Academy Partner (CAP) to help support the overall goals of student achievement and teacher development within a selected academy. An academy partner can assist with various efforts to support the academy such as: career focused training and professional development for teachers, student/teacher incentives, mentors, guest speakers, externships, job shadowing, supply needs (beakers, gloves, technology, etc.), equipment donations and more.

CMCSS has the following high school academies:

- Academy of Business and Finance at Clarksville High School
- STEM Academy at Kenwood High School
- Academy of Plant and Animal Systems at Montgomery Central High School
- Academy of Computer and Game Programming Technology at Northeast High School
- Academy of Health Science at Northwest High School
- Academy of Media Arts and Technology at Rossview High School
- Academy of Criminal Justice and Homeland Security at West Creek High School

Businesses and organizations interested in becoming a partner with an Academy should contact the Community Relations office at (931) 920-7872.





Academies & Foundation Partnership

The Education Foundation supports the Academies of CMCSS in many ways: identifying partners, providing funding and volunteers for specific Academy projects, supply donations and more.

For the past four years, the Foundation has partnered with Premier Medical Group to fully fund the 1:1 Technology Initiative for the Northwest High School Health Science Academy. This equates to a \$60,000 investment and ensures that all 400 students interested in the healthcare field have daily access to research, databases and programs designed to help them become prepared future health care professionals.

“All of our staff enjoys the opportunity to mentor the young people who may be working along beside us tomorrow. These students are engaged in learning about healthcare and are getting valuable lessons through the CMCSS programs. Kudos to all involved in supporting these impressive teenagers.” - Dr. Lance Sherley, Medical Director, Premier Medical Group





Leadership CMCSS

Public Education Advocacy Program

The Leadership CMCSS program is a joint community outreach effort between CMCSS and the Education Foundation. The sessions are designed to foster better community understanding of public education, local school system challenges and successes. Each year, community leaders and those interested in becoming involved in public education or public service are encouraged to apply for membership.

Participants are offered the opportunity to explore the interworking of our school district through focused session topics, interaction with teachers, students and administrators. There is also a class project component.

Topics Covered:

- CMCSS Vision, Governance and Strategic Work
- Public Education Today
- Accountability in Public Education
- Smaller Learning Communities
- District Operations
- District Budget



Prospective applicants may apply on the Foundation website beginning February of 2017.



Leadership CMCSS

Congratulations to the LCMCSS Class of 2016:

- Ashley Anderson
- Daniel Binkley
- Matt Bucy
- Amy Carroll
- Benjamin Carroll
- Elizabeth Devers
- Cheryl Durham
- David Harper
- Melissa Kinney
- Valecia Largin
- Erin Lee
- Sherry Lyle
- Rose Melton
- Kayla Mihalinec
- Katy Olita
- Fran Powers
- Chanah Ransom
- Shawn Scott
- Grayson Smith
- Dana Spinella
- Becky Starnes
- Stacey Streetman
- Privott Stroman



“As parents, we all want our children to succeed. As stakeholders in our community, we want all children to succeed. I believe it starts with their education and this takes getting involved. Leadership CMCSS is a great way to become involved and informed about our school system.”

- Daniel Binkley, LCMCSS Class of 2016





Legacy Art Collection of Public Schools

The Education Foundation partnered with local artist Lynne Waters Griffey to create a timeless and historic collection of all seven Clarksville-Montgomery County high schools. This is the first of its kind to be created and the Foundation is proud to own this collection of art. Alumni from all CMCSS high schools and other community members can purchase 8.5 x 11 inch prints for \$20 each or 18 x 24 inch prints for \$125 each. The 18 x 24 inch prints have the special distinction of being numbered and signed by the artist.

Proceeds from the sale of each watercolor print will directly benefit the Foundation's Count Me In Endowment Fund, which is intended to bring in additional streams of revenue and sustainable fundraising initiatives to ensure long-term financial support to CMCSS students and teachers. To learn more about investing in the educational future of the Clarksville community through our Legacy Art Fundraiser, please contact our office at (931) 920-7928.



CHS



KHS



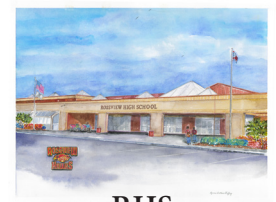
MCHS



NEHS



NWHS



RHS



WCHS



County-Wide Robotics Competition

The Education Foundation co-hosted the 4th Annual CMCSS District-Wide Robotics Competition, providing incentives to the winning teams. Zaxby's also supported the event by hosting the hospitality room for the judges and coaches that helped with the competition. CMCSS District-Wide Robotics Competition follows the guidelines established by the The First Lego League (FLL). Students compete in three areas: *Research, Core Values and Robot Rounds*. First, students are given a *Challenge* or problem to be solved by researching and creating an innovative solution. Secondly, students are judged in their application of *FLL Core Values* to their team procedures. Through these *Core Values*, students learn to respect each other's opinion while working together for the best of the team. Finally, students learn about coding while programming a robot to complete a series of tasks in a given amount of time.

The local competition was held amongst 11 Varsity teams and nine JV representing all seven middle schools and Moore Magnet Elementary and positively impacted the lives of nearly 150 students.

The First Lego League middle school program in CMCSS provides students with an interactive way to learn science, technology, engineering and math. While programming, researching and solving realworld problems, our students are learning skills that will prepare them for the future workforce.

1st place: Northeast Middle- Surge Team
2nd place: Rossview Middle- Gold Team
3rd place: Northeast Middle- Strike Team

In addition to the county competition, the Northeast Middle E3 Strike team won the 1st Place Overall at the First Lego League state competition, qualifying to attend the North American International Invitational in Carlsbad, CA. Out of 72 teams from all over the world, the E3 Strike team won the 1st Place Inspiration Award given to the team that has a balanced approach to all areas of FLL and inspires their judges and other teams.

For more information visit: <http://www.firstlegoleague.org/>



Pass & Go Advanced Placement



The Pass and Go program, which began eight years ago, has been a proven success by the increased number of students who take and pass AP courses and exams with above average scores. In partnership with Wyatt Johnson Automotive Group, Premier Medical Group, and Clarksville-Montgomery County Schools, the Foundation has supported this program in securing additional prizes to reward students who scored a 3, 4, or 5 on their advanced placement exams. In addition to the car give-away, students had the opportunity to win one of 5 iPads and several other prizes donated by Premier Medical Group as well as, numerous \$20-\$25 BP gas cards from Beach Oil and hundreds of pizzas and pizza gift cards donated by Antonio Murgas, Franchisee of Domino's.





City Saver District-Wide Fundraiser

For the sixth consecutive year, the Clarksville-Montgomery County Education Foundation partnered with the City Saver Education Funding Campaign to help local schools raise money. During this year's campaign, all Clarksville-Montgomery County elementary and middle school students sold the new 2016 Clarksville City Saver coupon book, which contains thousands of dollars in savings at over 200 local favorite restaurants, attractions and retail stores. The 360-page book sold for \$20 and includes dozens of buy one, get one free and the schools make a 50% profit on each sale. This year's City Saver Campaign generated \$200,000 for public education and 10% of those proceeds goes back to the Education Foundation. Since the fundraiser's inception nearly \$1 million has been generated for schools.

The City Saver fundraiser served as a way to get the whole community involved in supporting CMCSS schools. It allowed the Foundation to provide discounts to Clarksville families, free advertising to businesses, funds to schools and prizes for students. It was a win-win for everyone involved.

To learn more about your business placing a free ad in the 2017 City Saver Book, please contact Tom Beach at 877-450-SAVE (7283).



Foundation Program Investors

Platinum Corporate Sponsor \$15,000 & up

Premier Medical Group

Silver Corporate Sponsors \$3,000 & up

Beach Oil Company

Bronze Corporate Sponsors \$1,000 & up

Bi-County Solid Waste Management
Bill Powers
Clarksville Dept. of Electricity
Clarksville Fencing
Clarksville Home Builders Association
Cumberland Electric Membership Corp.
Cornerstone Financial Credit Union
DBS Engineering & Associates
Domino's Pizza
Gannett/The Leaf-Chronicle
F&M Bank
First Advantage Bank
Fortera Federal Credit Union
John Crabbe
Kohl's
Legends Bank
Maria Jimenez
RG Anderson
Rufus Johnson & Associates
US Bank
WBW Developers/Screaming Eagle Car Wash
Wendy's of Bowling Green

Donors \$500 & up

Austin Peay State University
Bridgestone Metalpha USA
Buffalo Soldiers of Clarksville, TN
Charles Keene
City of Clarksville
Clarksville Firefighters Association Local 3160
Clarksville-Montgomery County School System
Jack B. Turner & Associates
Kennedy Law Firm
Legends Bank
Morgan Contractors
Planters Bank
Publix
ServPro of Montgomery County
State Representative Joe Pitts
Valerie A. Hunter-Kelly

Donors \$200 & up

AFS-USA
Benjamin Carroll
Erin Lee, CPA Inc
Melody Scott
The Moreland Foundation
Nancy Britton
Neal-Tarpley Parchman Funeral Home
Tayranette Johnson-Williams





Count Me In Endowment Campaign

The Foundation currently has several programs in place to support CMCSS that align with the strategic work of the district! However, the Foundation Board of Directors decided in the fall of 2012 that growing the Foundation would take additional streams of revenue and sustainable fundraising initiatives that would ensure long-term support to CMCSS. The Foundation launched its Count Me In Endowment Campaign with nearly \$33,000 given from educators. To date, the CMI campaign has secured over \$350,000 in commitments of its \$1 million goal.

To learn more about how your organization can leave a lasting legacy through the CMI endowment contact Foundation Director, Abby Binkley at (931) 920-7955.

Educator Leadership Circle \$15,000 & Up



- Head of the Class Circle**
\$5,000
- Batson Nolan PLC
Clarksville Pediatric Dentistry
F&M Bank
Jack B. Turner & Associates
Millan Enterprises
Neal-Tarpley-Parchman Funeral Home
Rufus Johnson & Associates
State Rep. Joe Pitts
Gannett/The Leaf-Chronicle
Screaming Eagle Car Wash
McReynolds Nave & Larson
Sams Club
Thomas Lumber Company
Wyatt Johnson Automotive Group
Clarksville Department of Electricity
- Star Student Circle**
\$1,000-\$4,999
- Bill Powers
Terry Strange
Bridgestone Metalpha
Home Builders Association
Mayor Jim Durrett
Valerie A. Hunter-Kelly
Vulcan Materials

CMCSS Friends of the Foundation



The following CMCSS employees have made commitments to support Foundation programs above and beyond:

\$300 & Up Circle

Abby J. Binkley
Nancy Grant
Dr. Susan Jones
Kimberly Masters
Elise Shelton
James Sumrell
Inge Willich

\$200 & Up Circle

Matthew Adams
Constance Brown
Gary Carter
Dr. Phyllis Casebolt
Jose Garcia
Jennifer Gilstrap
Michelle Groth
Laura Gupton
Anita Hicks
Dr. Bryan Johnson
Candy Johnson
Jeanine Johnson
Debbie Jones
Brenda McDonald
Robert Murphy
Katarine Newberry
Barbara Peterson
Brenda Scarborough
Dr. Kimmie Sucharski
Gregory Tramel
Taylia Wallace
Dr. B.J. Worthington

\$100 & Up Circle

Jennifer Barber
Larry Barnett
Dr. Laura Barnett
Hal Bedell
Karel Biggs
Laura Boss
Marianne Branyly
Timothy Brown
Iris Camacho
Sandra Cardone
Lisa Clark
Julie Combs
Erika Cook
Heather Cozine
Deborah Cummings
Angelia Dees
Angel Dominique
Jennifer Duirden
Lisa Elliott
Angelica Encinas
Connie Engleman
Candy Favorite
Wendell Feldman
Willie Freeman
April Freaney
Ruby Garrett
Georgeann Goodlett
Danny Grant
Ariel Griffith
Jill Hamilton
Jessica Harris

Dr. Marlon Heaston
Erin Hedrick
Bonnie Herndon
Sherry Hersh
Linda Highfill
Ronald Hoskins
Christy Houston
Joyce Jolly
Kimberly Klinger
Cathy Kolb
Jacqueline Lemons
James Lester
Edward Long
Leah Luck
Jean Luna
Michelle Main
Stacy Maley
Russell Mang
Denette Mannen
Martha Mauldin
Kim McDaniel
Michael Moseley
Amie Noone
Tiffany Norbeck
Sydney Overdorf
Mary Parsons
Katherine Philips
Megan Pitts
Kendra Poszywak
Kaili Purrington
Rebecca Roberts

Virginia Robertson
Nicole Rollet
Rosanne Sanford
Amanda Schorr
Jacqueline Scott
Walter Scott
Katie Shaffer
Karen Shank
Shane Smith
Staci Sohn
April Sparks
Brittney Spence
Janet Staggs
Brenda Street
David Summerville
Whitney Swallows
Cheryl Taylor
Kathryn Taylor
Roberta Tharpe
Shari Tharpe
Elizabeth Thomas
Uliana Tolleson
William Wells
Melisse Williams



The Education Foundation would like to also thank all CMCSS school employees who participated in our Annual Count Me In Staff Campaign to support Foundation programs. Nearly 1,200 employees in our district contributed nearly \$47,818.68 this fiscal year!



Save the Dates:

Business After Schools

August 30, 2016 - Northeast High School
TBD- Northwest High School

Teacher Warehouse

CMCSS Central Services South

1312 Hwy 48/13

New Teacher Days

July 28 & 29, 2016

Regular Shopping Days

August (16, 20, 23, 27) 2016

September (10, 13, 27) 2016

October (1, 4, 22, 25) 2016

November 15, 2016

January (7, 10, 21, 24) 2017

February (4, 7, 18, 28) 2017

March (4, 18, 21) 2017

April 4, 2017

CMCSS Annual Staff Campaign

September 12-30, 2016

12th Annual

Vision to Reality Gala

Wilma Rudolph Events Center

November 5, 2016

To volunteer visit: www.volunteerclarksville.volunteerhub.com

A special thanks to Jostens for their in-kind donation printing of this Impact Report.



Clarksville-Montgomery County Education Foundation
621 Gracey Avenue
Clarksville, TN 37040

Phone: (931) 920-7955 Fax: (931) 920-9939

Like Us on Facebook: www.facebook.com/cmceducationfoundation

Follow Us on Twitter: [@CMCedFoundation](https://twitter.com/CMCedFoundation)

Website: www.cmceducationfoundation.com

Executive Director email: abby.binkley@cmcss.net

Many of the Foundation programs are sustained through the generous contributions of community partners who not only donate their resources, but also their time. Please browse the Foundation website under our Get Involved section to learn more about how you or your organization can be a part of supporting students and teachers in Clarksville-Montgomery Schools.

